

MONTHLY MEMBERSHIP PROGRESS REPORT

District 11 E2

Results as of: 7/31/2019

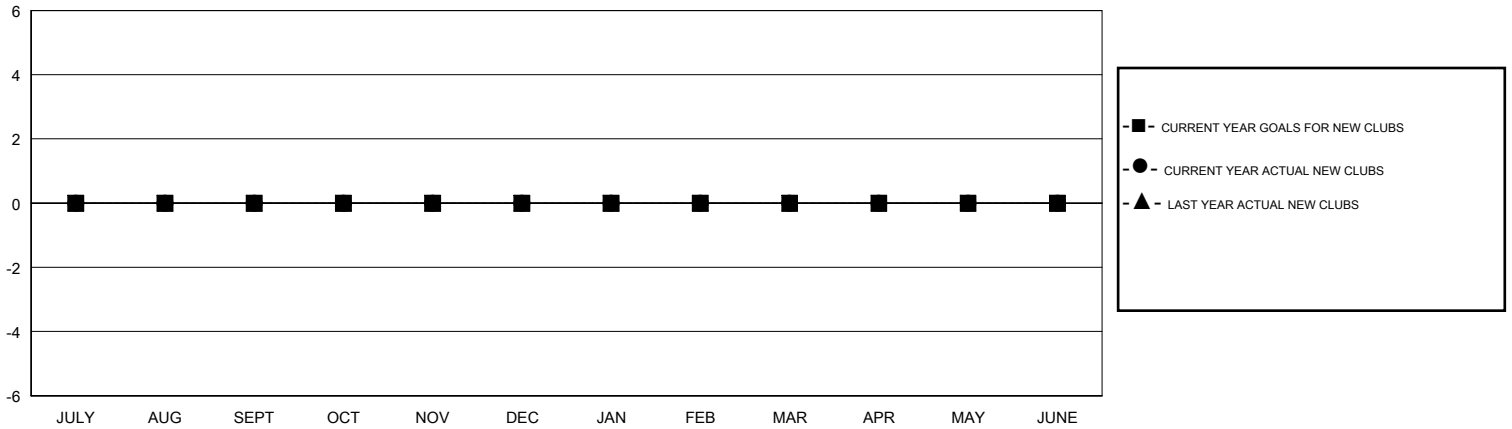
GMT:

LOCATION MICHIGAN

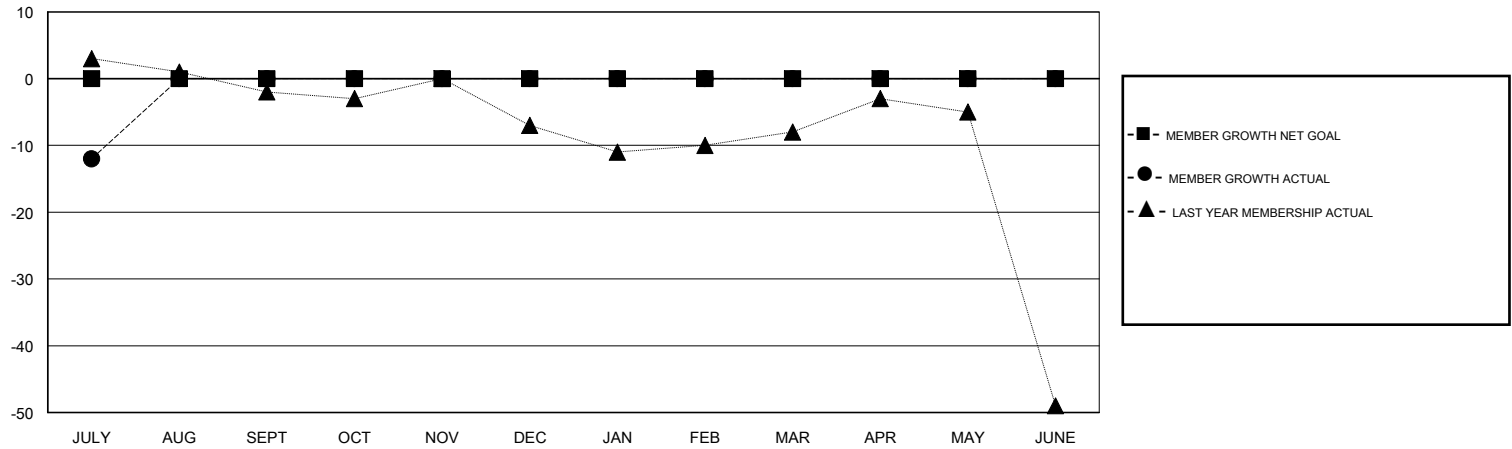
GMT CA

| Clubs | | | | Members | | | |
|-----------------------|---------------|-----------|---------------|-----------------------|------------------------|----------------------|--|
| RESULTS FOR 2019-2020 | | | | RESULTS FOR 2019-2020 | | | |
| QUARTER | NEW CLUB GOAL | NEW CLUBS | DROPPED CLUBS | QUARTER | MEMBER GROWTH NET GOAL | MEMBER GROWTH ACTUAL | DROPPED MEMBERS ACTUAL (including transfers) |
| JULY/AUG/SEPT | 0 | 0 | 2 | JULY/AUG/SEPT | 0 | 2 | 14 |
| OCT/NOV/DEC | 0 | 0 | 0 | OCT/NOV/DEC | 0 | 0 | 0 |
| JAN/FEB/MAR | 0 | 0 | 0 | JAN/FEB/MAR | 0 | 0 | 0 |
| APR/MAY/JUNE | 0 | 0 | 0 | APR/MAY/JUNE | 0 | 0 | 0 |

GOALS AND ACTUAL NEW CLUBS CUMULATIVE



GOALS AND ACTUAL MEMBERS CUMULATIVE



| | | |
|--|---|--|
| DROPPED CLUBS: 2 | 2 CLUBS OF 32 ADDED 1 OR MORE NEW MEMBERS | GENDER DISTRIBUTION MALE 580 (71.52%) FEMALE 231 (28.48%) |
| DROPPED MEMBERS DECEASED 1 CLUB CANCELLED 0 OTHER 13 <hr/> TOTAL 14 | CLICK HERE FOR CUMULATIVE MEMBERSHIP DATA | TOTAL FAMILY UNIT MEMBERS 105 FAMILY MEMBERS PAYING HALF DUES 53 |